

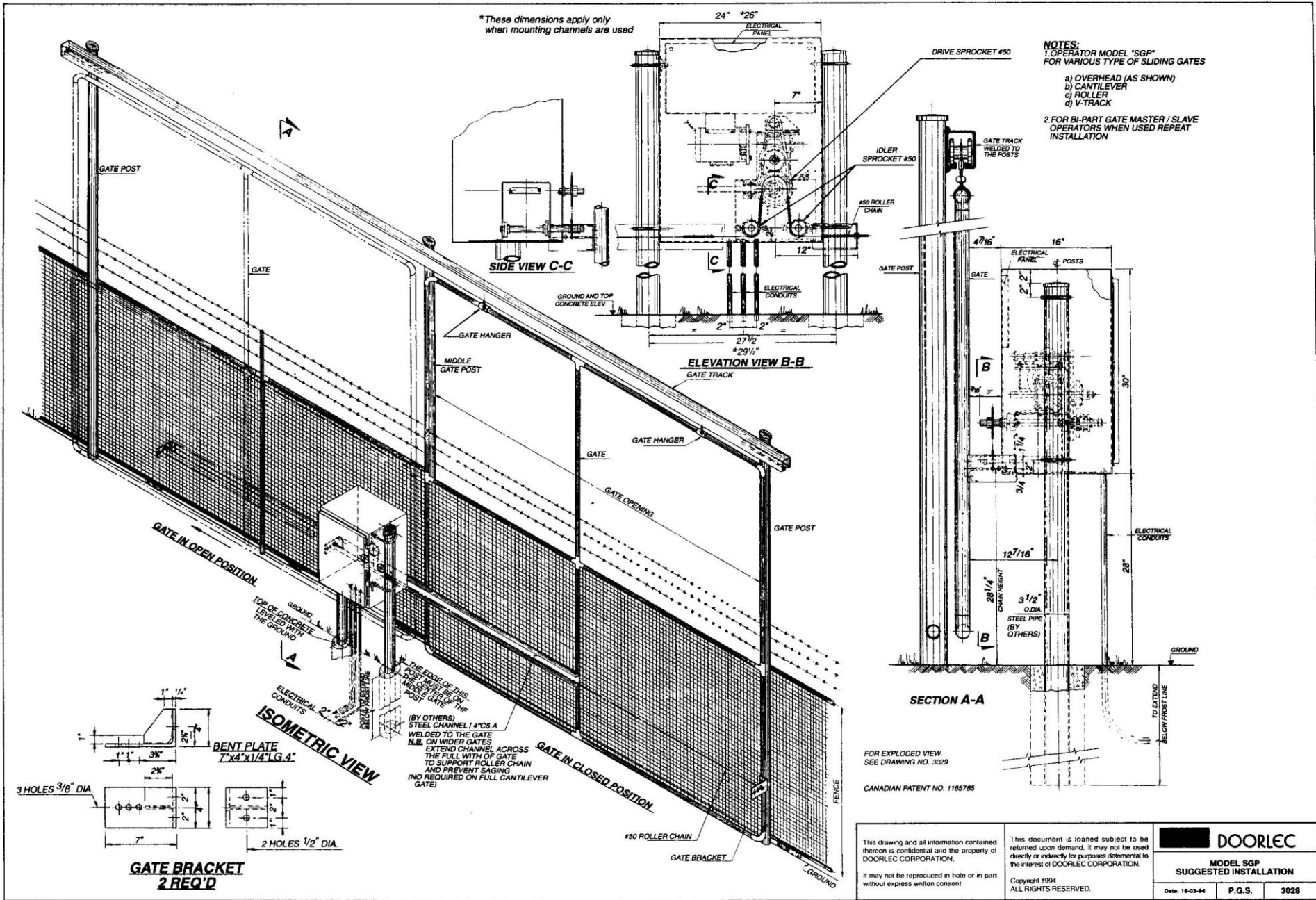
Technical Information

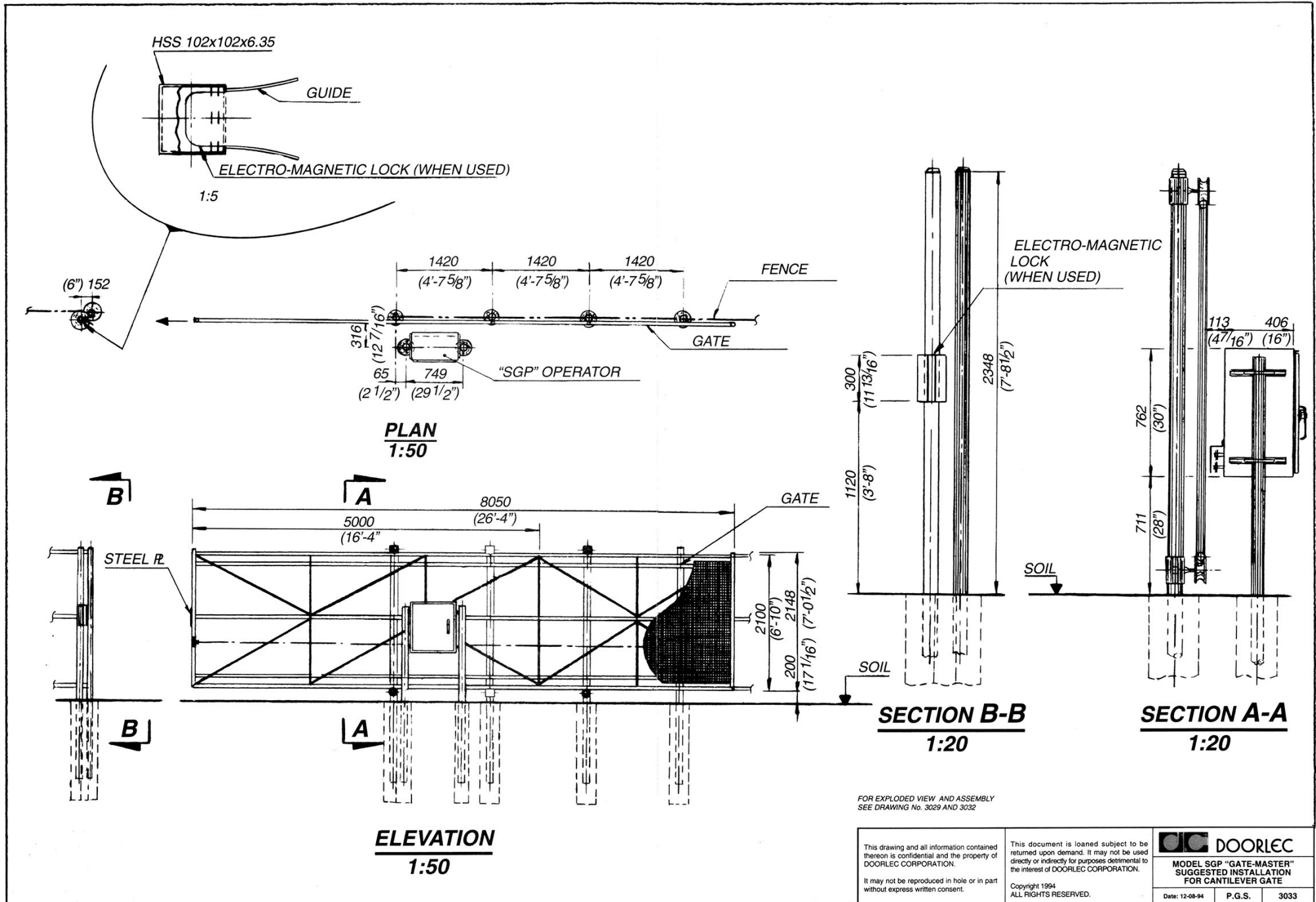
SGP

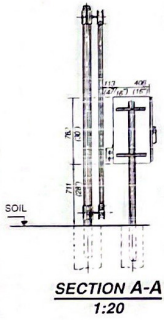
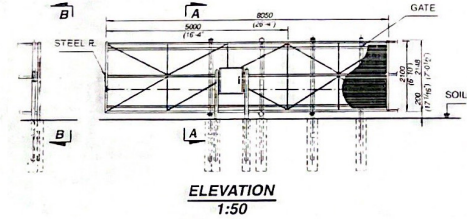
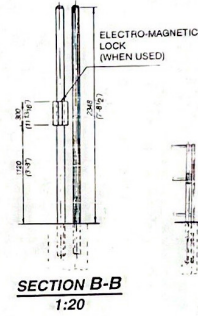
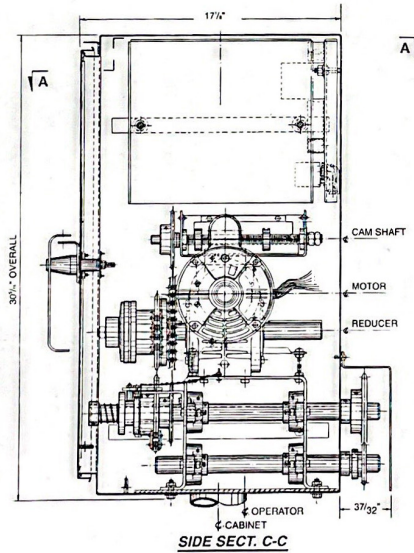
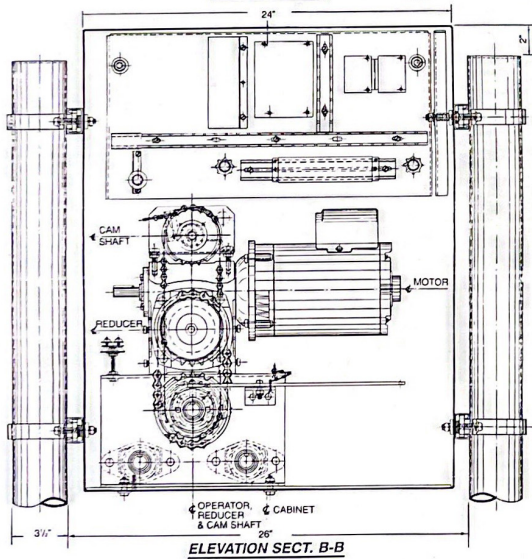
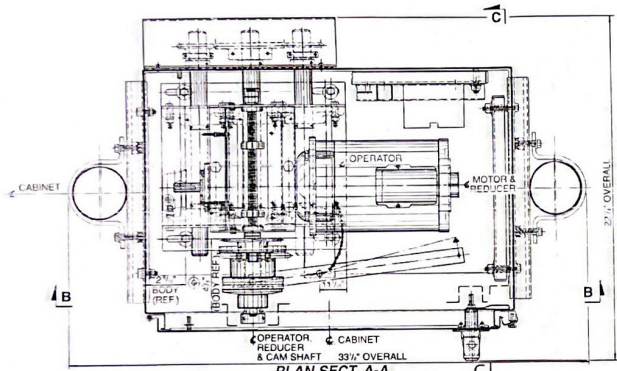


235 AVE LABROSSE, POINTE-CLAIRE,
MONTREAL, (QUEBEC) CANADA, H9R 1A3
TEL.: (514) 695-0772 - 800-667-0772
FAX: (514) 695-0248 - 800-667-0248
www.doorlec.com

For more information, please visit www.devancocanada.com or call toll free at 1-855-931-3334







REFERENCE DRAWING
For exploded view see dwg N° 3029

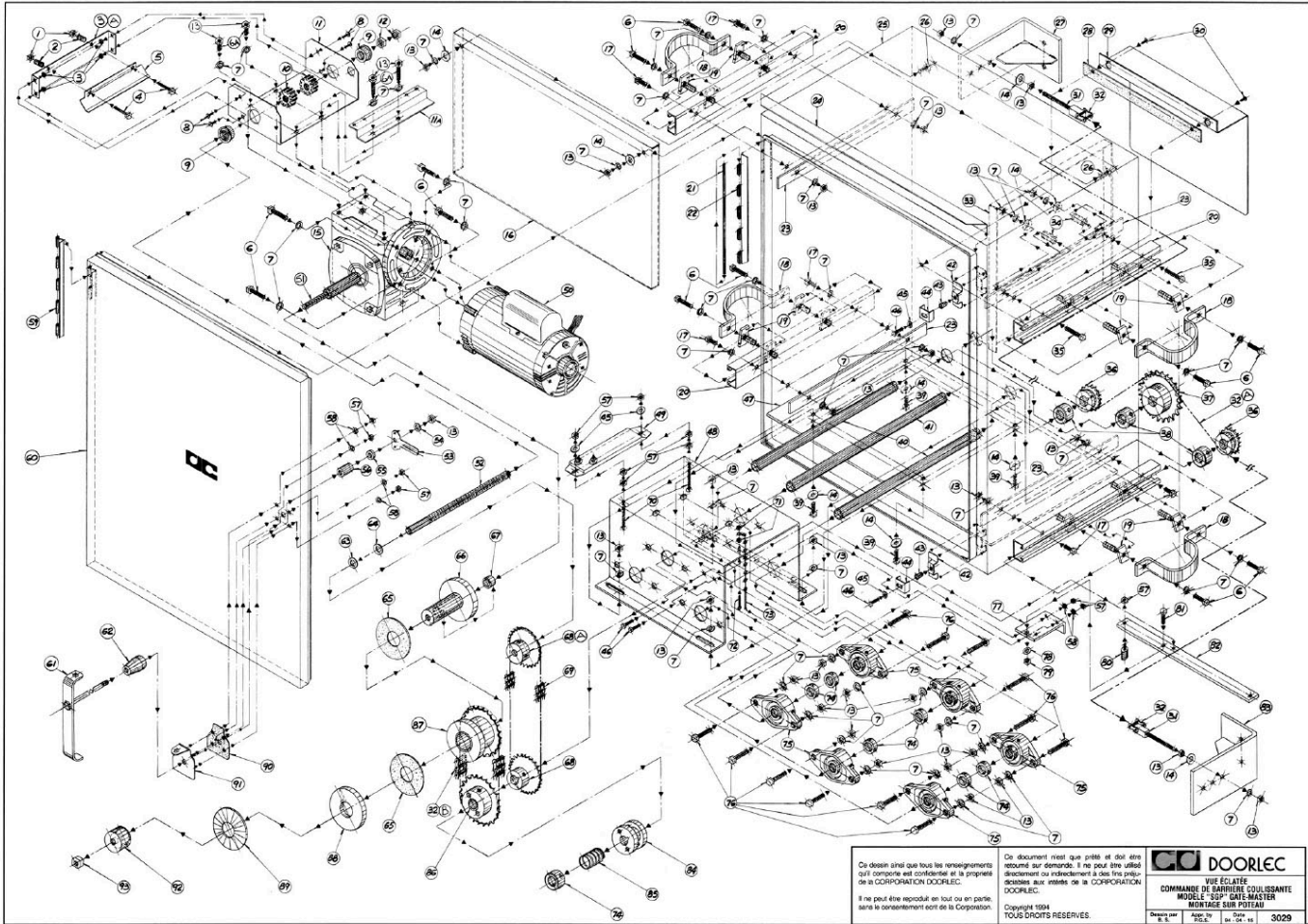
This drawing and all information contained thereon is confidential and the property of DOORLEC CORPORATION.
It may not be reproduced in whole or in part without express written consent.

This document is loaned subject to be returned upon demand. It may not be used directly or indirectly for purposes detrimental to the interest of DOORLEC CORPORATION.
Copyright 1994
ALL RIGHTS RESERVED.

DOORLEC	
OPERATOR ASSEMBLY SLIDING GATE OPERATOR MODEL "SGP" GATE MASTER POST-MOUNT	
Drawing by	Appr. by
Date	Date
3032	

EXPLODED VIEW

SGP



PART	DRAWING CODE	DESCRIPTION
1	3029	11280 1/4" (0.63cm) LOCK NUT NYLON
2	3029	2111 1
3	3029	11790 NUT HEX 8-32
4	3029	14505 LIMIT SWITCH HOUSING BRACE
5	3029	12617 CAP SCREW HEX 1/4" X 1 1/2" (0.63 X 3.8cm) STAINLESS
6	3029	12617 CAP SCREW HEX 1/4" X 1 1/2" (0.63 X 3.8cm) STAINLESS
6	3029	11265 CAP SCREW HEX 3/8" X 1" (0.94 X 2.5cm)
6A	3029	11265 CAP SCREW HEX 3/8" X 1" (0.94 X 2.5cm)
7	3029	11253 LOCK WASHER 3/8" (0.94cm)
8	3029	11280 MACHINE SCREW 10-32 X 3/8" (0.94cm)
9	3029	28202 BEARING 5/8" X 1 3/8" (1.59cm) FLANGED
10	3029	11801 GILITE CARB 5/8" (1.59cm) 24
11	3029	14600 LIMIT HOUSING SGP
18A	3029	14421 LIMIT SWITCH-HOLDER SGP
118	3029	11201 MACHINE SCREW #6 X 2" (16cm) (NOT SHOWN)
12	3029	11999 NUT 5/8" (1.59cm) 24 FILE THREAD
13	3029	11289 NUT 3" (7.6cm) U
14	3029	11969 WASHER FL AT 5/8" (0.94cm)
15	3029	15240 REINFORC BRG
16	3029	42680 COVER PLATE
17	3029	11258 CAP SCREW HEX 3/8" X 1" (0.94cm X 2.5cm) STAINLESS
18	3029	14421 MACHINE SCREW #6 X 2" (16cm) U
19	3029	11259 SPRING NUT 3/8" (0.94cm)
20	3029	14421 MACHINE SCREW #6 X 2" (16cm) U
21	3029	42681 HINGE EGG
22	3029	42682 REINFORCING METAL STRAP
24	3029	42685 DUMP RAIN SHIELD (SEE CABINET)
25	3029	42686 OPERATOR CABINET
26	3029	42686 STUD FOR CONTROL PANEL
27	3029	14421 GATE BRACKET "L"
28	3029	14460 CHAIN GUARD GASKET
29	3029	14435 CHAIN GUARD SGP
30	3029	11299 MACHINE SCREW 10-32 X 3/8" (0.94cm)
31	3029	11697 CHAIN TENSOR ROD 3/8" X 3 3/4" (0.94cm X 9.5cm) (POWER HEAD DRIVE)
32	3029	24951 CONNECTING LINK #20
37A	3029	24650 ROLLER CHAIN #50
38	3029	24661 ROLLER CHAIN #50 25' (1.32cm) 40 LINKS
33	3029	42687 CONTROL PANEL RIGHT
34	3029	11860 SPACER 3/8" (0.94cm) SGP
35	3029	11258 CAP SCREW HEX 3/8" X 1" (0.94 X 2.5cm) STAINLESS
36	3029	31317 IDLER SPROCKET 50B12-1" (12.5cm) BRN W/SS
37	3029	31110 DRIVE SPROCKET 50B22 (2.5cm) BRN W/SS
38	3029	26680 SHAFT COLLAR 1" (2.5cm)
39	3029	11253 CAP SCREW HEX 3/8" X 1 1/2" (0.94 X 3.8cm)
40	3029	26660 IDLER SHAFT 1" X 3 1/2" (0.94 X 2.5cm)
41	3029	26665 DRIVE SHAFT 1" X 1" (2.5 X 2.5cm) STRESS PROOF
42	3029	42688 DOOR CLIP SUPPORT
43	3029	42689 DOOR CLIP
44	3029	42690 DOOR CLIP WASHER 1/4" (0.62cm)
45	3029	11379 CAP SCREW HEX 1/4" X 1/2" (0.63 X 1.25cm)
46	3029	11427 OPERATOR DRIVE BASE PLATE
48	3029	14438 POWER DRIVE HOUSING
49	3029	15470 HEATER 175 WATTS
50	3029	3029 ELECTRIC MOTOR (SEE NAME PLATE FOR PROPER HP & VOLTAGE)
51	3029	11699 THREADED ROD 1/2" X 4 1/2" (1.25 X 11.25cm)
52	3029	26140 CAN SHAF 5/8" (1.59cm) 24 X 10 3/4" (9.5cm) FINE THREAD
53	3029	42691 LOCK PLATE
54	3029	11252 WASHER 3/8" (0.94cm)
55	3029	42692 LOCK ROD SPACER
56	3029	42693 LOCK BACK SUPPORT
57	3029	18811 NUT 1/4" (0.63cm)
58	3029	10377 LOCK WASHER 1/4" (0.63cm)
59	3029	42694 DOOR HINGE
60	3029	42695 OPERATOR CABINET DOOR
61	3029	42696 LOCK HANDLE
62	3029	42697 LOCK HANDLE SPACER
63	3029	11839 WASHER 5/8" (1.59cm) SPECIAL
64	3029	11839 WASHER 5/8" (1.59cm) SPECIAL
65	3029	12577 FIBER DISC TORQUE LIMITER
66	3029	12707 HUB TORQUE LIMITER
67	3029	14429 SPACER TORQUE LIMITER SGP 5/8" (1.59cm)
68	3029	31105 LIMIT DRIVE SPROCKET 41B23-1" (1.5cm) BRN W/SS
69	3029	31104 LIMIT DRIVE SPROCKET 41B23-1" (1.5cm) BRN W/SS
70	3029	24502 ROLLER CHAIN #41 34" (85cm) 68 LINKS
71	3029	11273 CAP SCREW HEX 1/4" X 2" (0.63 X 5.1cm)
72	3029	11811 HEX NUT 1/4" (0.63cm)
73	3029	11272 CAP SCREW HEX 1/4" X 1 1/4" (0.63 X 3.12cm)
74	3029	11554 COFFER PIN- CHAIN DISCONNECT ARM HOLDER
75	3029	26680 SHAFT COLLAR 1" (2.5cm)
76	3029	28404 BEARING CAST IRON FLANGE 1" (2.5cm)
77	3029	11263 CAP SCREW HEX 1 1/2" (3.25cm)
78	3029	14439 BRACKET "L" DISCONNECT ARM SGP
79	3029	11374 WASHER 5/16" (0.78cm)
80	3029	11280 NUT 1/4" (0.63cm) NYLON
81	3029	11839 NYLON ROLLER WITH ALLAN BOLT 1/4" X 1 1/4" (0.63 X 3.12cm)
82	3029	11263 CAP SCREW HEX 5/16" X 1" (0.78 X 2.5cm)
83	3029	14431 DISCONNECT LEVER SGP
84	3029	14431 GATE BRACKET "L"
85	3029	12124 COUPLING SPRING
86	3029	20109 COUPLING SPRING
87	3029	31720 TORQUE LIMITER 4" X 1/2" (10 X 1.25cm)
88	3029	31774 PLATE TORQUE LIMITER 4" X 1/2" (10 X 1.25cm)
89	3029	22001 WASHER SPRING 100 X 41 X 4
90	3029	42698 LOCK HANDLE GASKET
91	3029	42699 LOCK HANDLE PLATE
92	3029	31276 PRESSURE CLIP TORQUE LIMITER
93	3029	11810 NUT 1/2" (1.25cm) NYLON

Ce dessin ainsi que tous les renseignements qu'il comporte est confidentiel et la propriété de la CORPORATION DOORLEC.
Il ne peut être réutilisé en tout ou en partie sans le consentement écrit de la Corporation.

Ce document n'est que prévu et doit être retourné sur demande. Il ne peut être utilisé directement ou indirectement à des fins autres que celles autorisées par la CORPORATION DOORLEC.
Copyright 1994
Tous droits réservés.

DOORLEC
VUE ÉCLATÉ
COMMANDE DE SERRURE COULISSANTE
MODÈLE "SGP" GATE-MASTER
MONTAGE SERR PROTEAU
3029

HORSEPOWER SELECTION GUIDE

MOTOR	GATE TRAVELLING SPEED	MAX. GATE WEIGHT	MAXIMUM OVERHEAD GATE OPENING	MAXIMUM CANTILEVER GATE OPENING	MAXIMUM ROLLER/V-TRACK GATE OPENING
¾ H.P. 249W	45 ft./min. (13.7 m/min.)	1550 lbs. (703kg)	46 ft. (14m)	26 ft. (8m)	36 ft. (11m)
1 H.P. 373W	45 ft./min. (13.7 m/min.)	1850 lbs. (840kg)	58 ft. (18m)	32 ft. (10m)	48 ft. (15m)
1½ H.P. 560W	45 ft./min. (13.7 m/min.)	2100 lbs. (955kg)	70 ft. (21m)	38 ft. (12m)	60 ft. (18m)
2 H.P. 1493W	45 ft./min. (13.7 m/min.)	2500 lbs. (1131kg)	85 ft. (26m)	44 ft. (13m)	72 ft. (22m)

IMPORTANT NOTICE

Electrical wiring shown are for all our electric door, gate, traffic control barrier operators built with the Logic Controller DC2000 since 1994.

For electric operator prior of 1994 please fax or email the serial number and model of operator, we will fax you the appropriate electrical drawing for that unit for per usual.

You will find the serial number on the control cabinet cover sticker. The first two digits represent the year of fabrication and the 4 or 5 next digits are the serial number.

40a
(115v.)

41a
(230v.)

42a
(208v./460v./575v.)